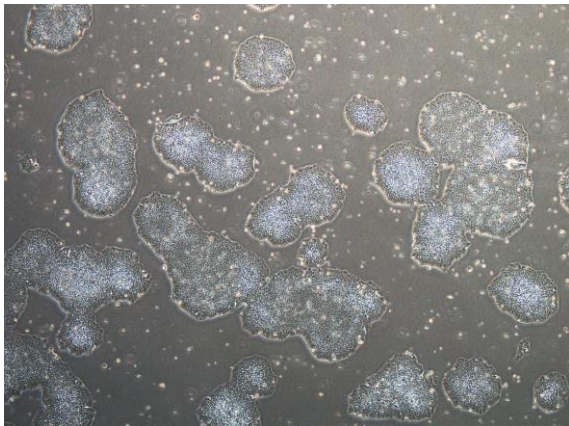
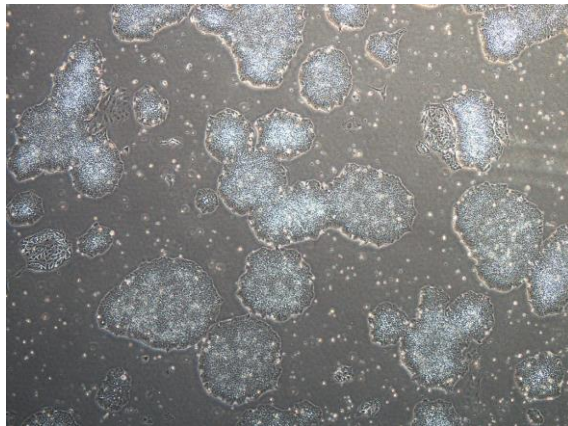


【 CiRA-j-1236 】 Morphology of iPSC colonies

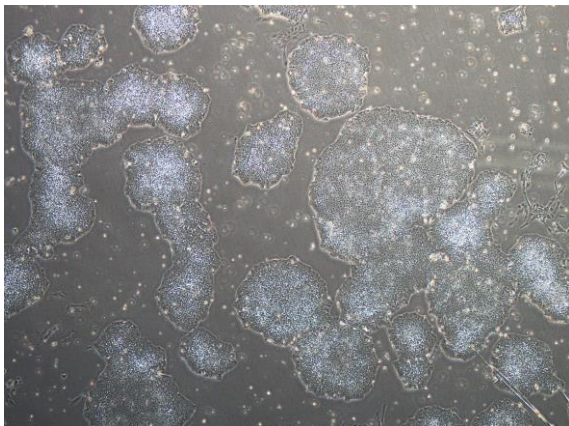
CiRA-j-1236-A: passage-2



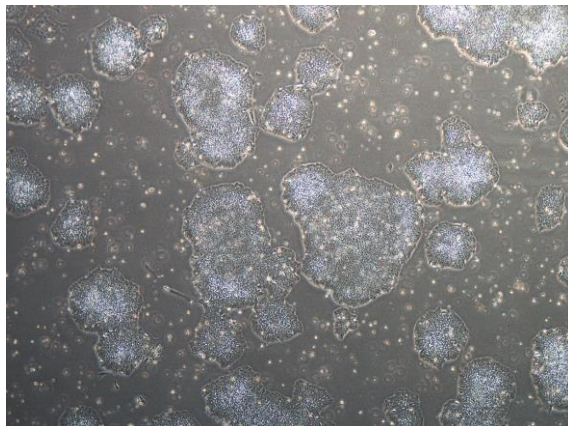
CiRA-j-1236-B: passage-2



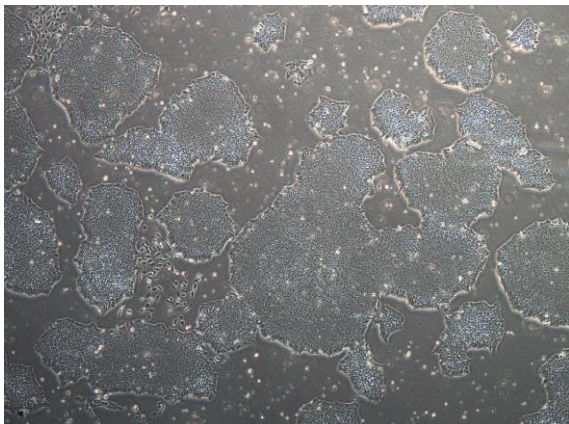
CiRA-j-1236-C: passage-2



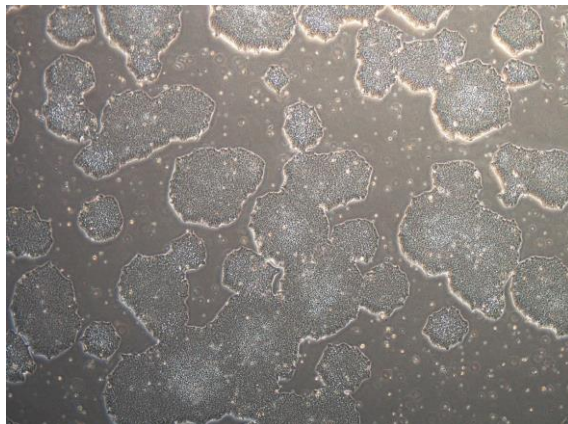
CiRA-j-1236-D: passage-2



CiRA-j-1236-E: passage-2



CiRA-j-1236-F: passage-2



(All images were captured at 4x magnification)